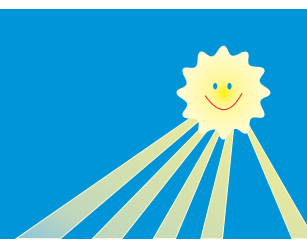


MAGNETIC DEVELOPMENT, INC.

68 Winterhill Rd., Madison, CT 06443
 Phone: 203-421-3562, Fax: 203-421-7948



MOBILE SOLAR HEATER

No Installation required!

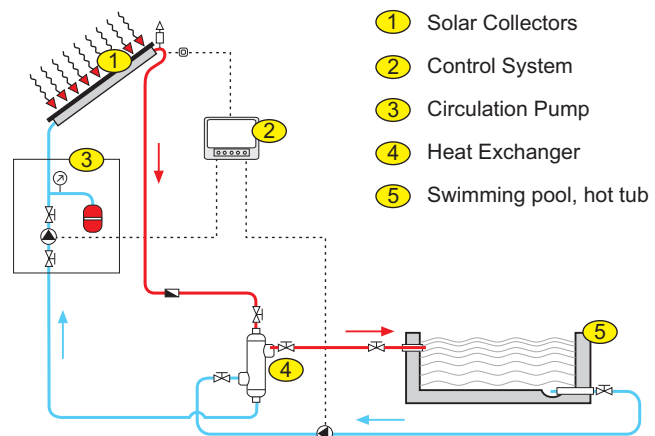
Self-contained solar heater delivers free hot water for:

- Swimming pools and hot tubs
- Car washes
- Agricultural and rural
- Animal farm applications
- Laundries
- Fish farming



This heater contains all the components and instrumentation necessary to start working immediately after unpacking. It is easy to operate - the only installation required is connecting the heat exchanger to the water source and position it facing south.

The device is ideal for smaller in-ground pools and all above-ground pools up to 12,000 gallons. For larger pools, extension units are available. The heater uses high-quality solar collectors, with ratings by the Swiss Solar Research Institute.



Technical Data:

Dimensions of solar collectors: 6x6 ft
 Solar absorption area: 38 sq. ft (3.53 sq. m)
 Maximum operating pressure: 6 bar
 Weight: 190 lbs
 Circulation pump power requirements: 70W
 Heat Capacity: shown in Table below for various US locations: (in Mln Btu per month):

Location	Jan	Feb	Mar	Apr	May	Jun	Jul	Aug	Sep	Oct	Nov	Dec
Hartford, CT	1.4	1.6	2.1	2.2	2.5	2.7	2.8	2.7	2.2	2.0	1.4	1.2
Detroit, MI	1.2	1.4	2.0	2.3	2.8	3.0	3.1	2.8	2.3	1.7	1.1	0.8
Kansas City, MO	1.9	1.8	2.4	2.7	2.9	3.1	3.4	3.1	2.7	2.3	1.7	1.5
Denver, CO	2.2	2.2	2.5	2.8	3.1	3.2	3.3	3.2	2.8	2.5	2.1	1.9

Source: National Solar Radiation Data Base, Average Data for 1981-1990

Example: 3 Mln Btu per month is the energy required for heating 48,000 lbs of water (12,600 gallons) by 50 degrees F or 6,300 gallons by 100F, assuming 80% efficiency of solar absorption. It is the energy equivalent to 33 gallons of propane.